



GUN CLUB, INC.

STANDARD OPERATING PROCEDURES

Revision 12.0

Effective: September 11, 2023

Contents

GTGC ADMINISTRATIVE ITEMS	2
GTGC BOARD OF DIRECTORS:	2
GTGC CHIEF RANGE SAFETY OFFICERS:.....	2
CLUB PHYSICAL ADDRESS.....	2
CLUB MAILING ADDRESS.....	2
CLUB CONTACT PHONE NUMBER	2
CLUB EMAIL ADDRESS:.....	2
CLUB WEB SITE:.....	2
HOURS OF OPERATION	2
OPERATIONS MANAGED BY	2
SAFETY PERSONNEL TRAINING REQUIREMENTS	3
EMERGENCY INFORMATION	3
1.0 CLUB RULES.....	4
2.0 GENERAL RULES WHICH APPLY TO ALL RANGES.....	6
3.0 SPECIFIC RANGE RULES	9
3.1 ACTION RANGES.....	10
3.2 25/50 YARD HANDGUN & RIMFIRE RIFLE RANGE.....	11
3.3 LTC RANGE (3/7/15 YARDS)	12
3.4 100/200 YARD RANGE.....	13
3.5 600-YARD RANGE	14
3.6 SHOTGUN RANGE.....	15
3.7 SILHOUETTE RANGE	16
3.8 4-H ARCHERY RANGE	17
4.0 RULES FOR GTGC ORGANIZED MATCHES	18
5.0 GTGC FIREARMS INSTRUCTOR POLICY.....	19
6.0 GOLDEN TRIANGLE GUN CLUB STANDARD SAFETY BRIEF	20
7.0 LOST AND FOUND POLICY	21
APPENDIX A - BOARD OF DIRECTORS LIST	22
APPENDIX B – RANGE SAFETY OFFICERS.....	23
APPENDIX B-1 - PROCEDURES AND PENALTIES	24
APPENDIX C – LIST OF APPROVED INSTRUCTORS.....	26
APPENDIX D – RANGE VARIATIONS AND SAFETY PLANS	27
APPENDIX E – RANGE INSPECTION CHECKLIST	28

GTGC ADMINISTRATIVE ITEMS

The Golden Triangle Gun Club, Inc. (hereafter the Club or GTGC) is an IRS 501-(c)(7) corporation chartered in the State of Texas and dedicated to the use and promotion of safe Firearms Shooting Activities for its membership, for Club scheduled events, and the General Public.

GTGC BOARD OF DIRECTORS:

- President, Richard Worthey
- Vice President, Charles Shelton
- Secretary-Treasurer, Heather Avery
- Director of Media Relations, Stephen Watson
- Director of Safety & Training, Richard Worthey
- Director of Security, James Reaux
- Director of Women's Programs, Heather Avery
- Director at Large, David Cheshire
- Director at Large, Diana Licatino
- Director at Large, John Woods
- Match Directors and Assistant Match Directors
(See Appendix A)

GTGC CHIEF RANGE SAFETY OFFICERS:

Richard Worthey, *CRSO and the Director of Safety & Training* Overseeing the RSO Program

- Heather Avery, CRSO
- Tommy Cruse, CRSO
- Walter Haley, CRSO
- Andre Rosales, CRSO
- James Reaux, CRSO
- Albert Faggard, CRSO
- Ronnie Dillon, CRSO

CLUB PHYSICAL ADDRESS:

7546 Erie Street
Beaumont, TX 77705

CLUB MAILING ADDRESS:

P.O. Box 5305
Beaumont, TX 77726-5305

CLUB CONTACT PHONE NUMBER:

(409) 729-4842

CLUB EMAIL ADDRESS:

gtgctx@gmail.com

CLUB WEB SITE:

www.goldentrianglegunclub.com

HOURS OF OPERATION

Every day, 30 minutes before SUNRISE until 30 minutes after SUNSET (as defined by the US Naval Observatory).
Exception: GTGC Organized and Supervised activities. No shooting activities after 10:00 PM.

OPERATIONS MANAGED BY

Corporate Direction: GTGC Board of Directors General Operation: GTGC President & Secretary-Treasurer
Daily Range Operations & Safety Activities: Chief Range Safety Officers & Range Safety Officers

All GTGC Members have the responsibility and authority to ensure a safe and lawful operation of the GTGC.

SAFETY PERSONNEL TRAINING REQUIREMENTS

Each Chief Range Safety Officer (CRSO) & Range Safety Officer (RSO) must successfully complete National Rifle Association (NRA) training courses and be certified by the NRA as a CRSO or RSO. CRSO & RSO personnel will maintain NRA Certification as required by the NRA. In addition, all CRSO and RSO must receive the Club's Range Specific Safety Orientation for Range Safety Officers conducted by the Director of Safety and Training.

GTGC CRSOs & RSOs will be certified and given authority by the direction of the GTGC Board of Directors, under the supervision of the Director of Safety & Training. CRSOs & RSOs will serve in the capacity of GTGC Operations and Safety Personnel, enforce the GTGC SOP, act as necessary to provide for the safe operation of the GTGC, and ensure the protection of persons and property at the GTGC.

EMERGENCY INFORMATION

In an emergency, **REMAIN CALM AND CEASE FIRE IMMEDIATELY**. Call **911** and tell the Emergency Operator the location is:

- The Golden Triangle Gun Club, 7546 Erie Street, Beaumont.
- The entrance is located 2 miles south of Cardinal Drive with a large yellow sign at the entrance.
- Someone will meet emergency personnel at the gate to let them in and direct them to the emergency.

The 911 operator will first ask about the nature of the emergency. If the reason that you are calling involves an accidental gunshot wound, it is essential to state the following:

- There has been a firearms-related accident,
- All range activities have been halted,
- The scene is safe, and all firearms have been secured.

Render first aid, if you can. As soon as possible, call the Club President and the Director of Safety to provide information regarding the emergency. Document the incident as best as possible and submit this information to an RSO and the Director of Safety & Training ASAP.

Contact	Phone Number	Contact	Phone Number
EMS	911	Richard Worthey (President)	(409) 210-9333
Sheriff	(409) 835-8668	Fire District #4	(409) 735-2419

1.0 CLUB RULES

1. All members must have immediate access to display their GTGC membership card while at the range.
2. Do not give the gate code to anyone, and always escort your guest. Giving out the gate code is considered theft of service and may result in losing your membership with NO chance of reinstatement.
3. Any member found guilty of willfully damaging or stealing club property shall immediately lose his/her membership and be prosecuted to the fullest extent of the law.
4. Any dependent in a club member's immediate family may accompany the club member to the range. Guests must always be under the member's supervision, and the member will be responsible for their actions.
5. A member may take one (1) non-family member guest to the range for a maximum of three (3) times only. After the third visit to the range, this guest is requested to join the Club. This guest must always be under the member's supervision, and the member will be responsible for their actions.
6. Physical or verbal abuse of persons or destruction of club property will not be tolerated. Discourteous acts will not be allowed. All members and guests must use common sense, be courteous, and be safe. It is the duty of each member to call these rules to the attention of any violator and to ask that he/she abide by these rules and regulations. If the violator continues to disregard the rules, call this to the attention of the members present and inform a Board Member or RSO of the name(s) of the violator(s) and all witnesses. Abusive behavior, including extreme profanity, will not be tolerated by anyone.
7. The use of pyrotechnics and fireworks is prohibited on GTGC property. This prohibition includes targets that explode upon bullet impact. This will not be tolerated and will result in immediate removal from the range and loss of membership.
8. Open or Concealed Carry is allowed but may be restricted by Match Competition Rules during authorized Matches or by Instructors. Please check ahead of attendance.
9. Hunting and trapping on GTGC property is by GTGC Board of Directors' written Permit only, signed by the current President. Hunting will not be tolerated and will result in immediate removal from the range and loss of membership.
10. Do not Bother Others or Touch Their Guns without permission:

Respect other shooters' privacy unless a safety issue arises. Do NOT engage other shooters to correct a perceived safety violation unless absolutely necessary – inform the RSO instead. Shooters have the right and responsibility to call for a cease-fire should a SERIOUS safety event occur. Handling/touching another shooter's firearm without their permission is a major breach of protocol. Offering unsolicited "training" or other instructional suggestions to other shooters is also impolite and can be intimidating.
11. Clean Up After Yourself: Remember to take down your old targets, sweep up brass, throw away your trash, and return any equipment/chairs, etc. Other people use the range, too; no one wants to walk up to a dirty lane. Do not put live rounds in the trash cans.

12. THE CONSUMPTION OR BEING UNDER THE INFLUENCE OF ALCOHOLIC BEVERAGES, CONTROLLED SUBSTANCES, DRUGS, OR A COMBINATION OF WILL NOT BE PERMITTED BY ANYONE ON THE GOLDEN TRIANGLE GUN CLUB PROPERTY AT ANY TIME.

The possession and/or use is prohibited at all times, and, if suspected, will be reported to the local law enforcement. Members are warned that some prescription and over-the-counter drugs can produce diminished capacity. If an RSO believes that someone is impaired, the RSO is empowered to order the individual to stop shooting and leave the Club.

13. Illegal activity of any kind will not be tolerated and will result in immediate removal from the range and loss of membership.

14. Smoking is prohibited on or within 20 feet of any firing line(s) or buildings at any time. This includes any form of tobacco or other substance, including cigarettes, vapor cigarettes, electronic cigarettes, cigars, pipes, etc.

15. Vehicle speeds within the Club boundaries must not exceed 10 MPH. This includes the entrance road.

16. OBEY all traffic, range closure, or other safety signs.

17. Do not climb on, dig into the impact or side safety berms, or any concrete safety walls.

18. Grass mowing personnel have priority – cease-fire and wait for them to finish.

19. Children under the age of 18 will not be allowed on the firing range without supervision from an adult member, parent, or guardian. Children found unsupervised will be escorted to the adult parent or guardian and ordered to leave the property for the safety of the children and others using the facility.

2.0 GENERAL RULES WHICH APPLY TO ALL RANGES

GTGC Members, Guests of GTGC Members, and Non-GTGC Members participating in GTGC Scheduled Competitions or Approved Events must obey all commands issued by the GTGC Range Safety Officers while on Club property. This includes the requirement to display their GTGC Membership Card and/or State-issued ID upon request by the Range Safety Officer.

Failure to obey the GTGC Range Safety Officer's instructions will result in punitive action being taken against the violator. Punitive Actions may include but are not limited to immediate ejection from the GTGC property, loss of GTGC membership, and, in the case of danger to persons or property, subject to emergency response by Law Enforcement Personnel.

FIRING LINE – A line from which gunfire is directed at targets on a range. Unless marked otherwise, the location of the firing line is along the front edge of the concrete and/or shooting bench at each range. It may also be identified by the presence of a RED line painted on the concrete or by RED signs with "FIRING LINE" stenciled in white on signs attached to the inside face of the metal or wooden support posts.

SAFETY LINE – Indicated by a YELLOW line painted on the concrete located several feet behind the Firing Line. No one is allowed in front of this line when other people are downrange, and the line is "COLD".

"LINE IS COLD" – Command and acknowledgment that all firearms are unloaded with the actions, bolts, or cylinders opened, and no handling of firearms is allowed.

"LINE IS HOT" – Command and acknowledgment that firearms may be handled, loaded and shooters may commence firing.

READ and OBEY all POSTED RANGE RULES. The POSTED RANGE RULES are specific to the range on which they are POSTED.

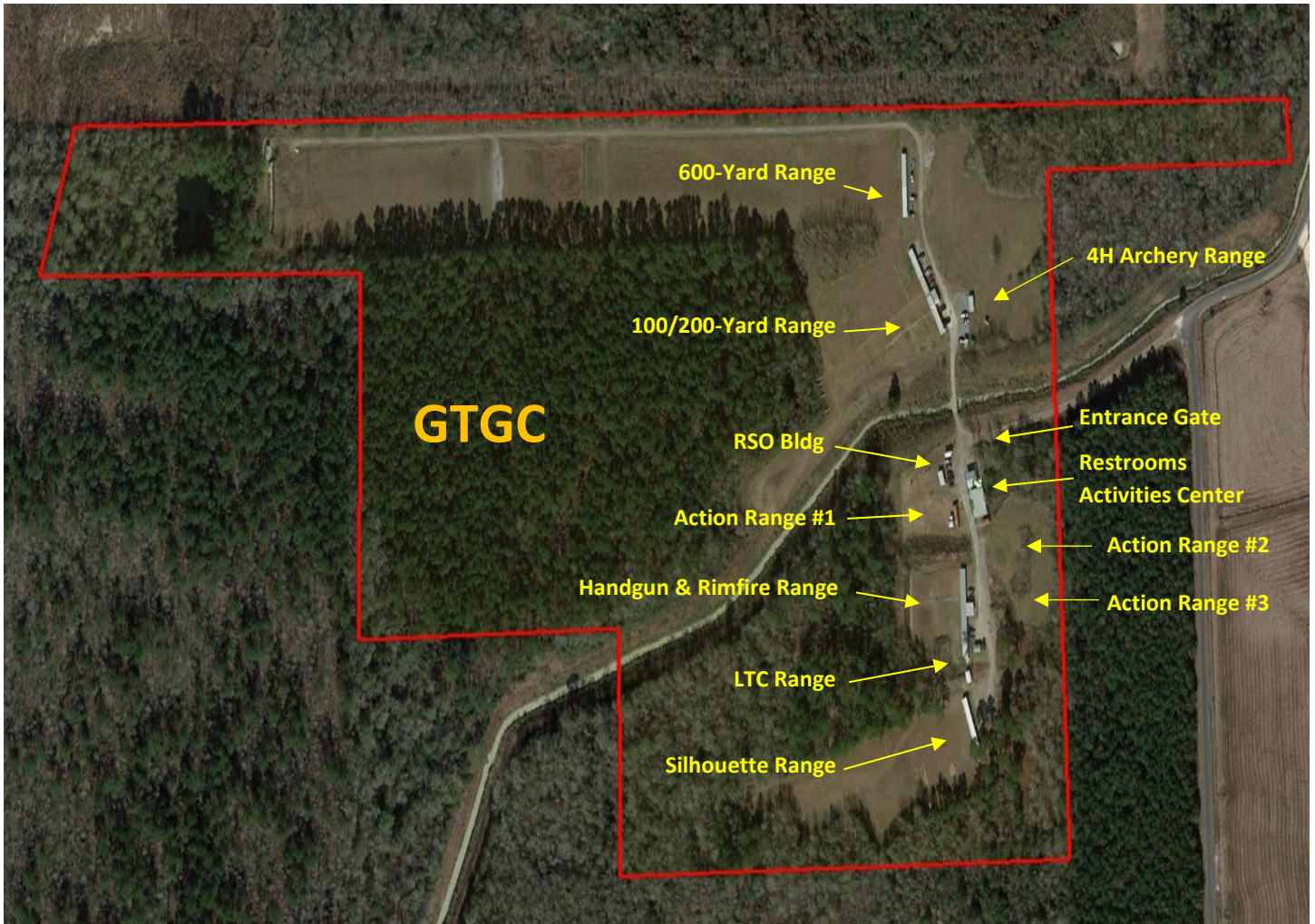
1. ALWAYS keep your firearm pointed in a safe direction, usually downrange.
2. ALWAYS keep your finger off the trigger until your sights are on target and you are ready to shoot.
3. ALWAYS keep your firearm unloaded until ready to use.
4. ALWAYS keep the action open while people are downrange.
5. NEVER handle/touch a firearm while people are downrange checking or changing targets.
6. All firearms must be unloaded, ACTIONS OPEN (slides back and bolts or cylinders open), except when firing from the firing line. All firearms on the firing line must have the muzzle pointed downrange. No person is permitted downrange until all shooters on the firing line have made their firearms safe by unloading, leaving actions open, and have communicated and acknowledged to all others that the line is "COLD". Shooters may now go downrange.
7. DO NOT HANDLE/TOUCH ANY FIREARMS WHILE PEOPLE ARE DOWNRANGE. This includes cleaning, adjusting sights, or moving gun rests. This also includes moving rifles or shotguns from the storage racks at the back of the range to the benches or firing line. EVERYONE must step behind the YELLOW safety line while the range is "COLD" to ensure no firearms are being touched.

8. Ammunition and magazines may be handled BEHIND the YELLOW safety line while people are downrange. However, you MAY NOT approach the firing line to retrieve magazines or ammunition while people are downrange. Absolutely NO firearms may be handled behind the YELLOW safety line while people are downrange.
9. Once all shooters have returned from checking their targets downrange, and it has been visually confirmed that no one else is downrange or in front of a firing line, then shooters must communicate and acknowledge with all other shooters that the range is "HOT". Shooters may now approach the firing line, handle their firearm to clean or make any necessary sight adjustments, load the firearm, and commence firing at their target.
10. Eye and hearing protection are required for everyone. Hats are encouraged but not required.
11. Know what to do during a CEASE FIRE: STOP, DO NOT MOVE! SERIOUSLY, STOP, as this may prevent a negligent discharge. When cleared to do so, set down your firearm pointing downrange, and STEP AWAY from the shooting bench. If there is a Range Officer(s) present, they will give instructions from that point and/or secure all firearms. Anyone can and should call CEASE FIRE when they see something unsafe.
12. Transport of Firearms:
 - a. It is preferred that members and their guests use a gun case, range bag, or gun rug to transport firearms. DO NOT bring your firearm to the range in a grocery sack.
 - b. All cased, uncased, and unholstered firearms being transported to and from the parking area, to and from the shooting ranges, and at any other place on GTGC property shall be UNLOADED and have actions or cylinders opened (or blocked with a chamber empty flag), the safety engaged, and magazine removed (if applicable). **ALL UNCASED FIREARMS SHALL BE UNLOADED AND CARRIED WITH THE MUZZLE POINTED UP. NO EXCEPTIONS!**
 - c. No cased, uncased, or unholstered firearms may be transported to or from the shooting ranges while the line is "COLD" unless the designated Match Director or Range Safety Officer specifically allows it. Generally, this will only be allowed during extended "COLD" periods and not while any member or guest is downrange.
 - d. DEFINITION - LOADED FIREARM: All firearms are considered LOADED if any of the following are true; if a cartridge is within any part of the firearm; if a clip or magazine is inserted into the firearm; or if the ACTION is CLOSED WHETHER OR NOT ANY AMMUNITION IS IN IT.
 - e. Pellet, BB Rifles, and Pistols at GTGC are FIREARMS and are subject to the same rules.
13. Targets must be placed so that when shooting targets, all projectiles die in the impact berm. Take the extra time to look at the height of the target and your height in relation to the berm; are they aligned correctly, so the bullets impact the center of the berm? When shooting metal targets, all metal targets must be placed so that the deflected projectile does not present a hazard to persons or property. (Refer to Range Specific requirements for minimum distances for steel). NO CROSS FIRING! - Shoot the target directly in front of you!
14. All firing must be done at a designated firing line for each range. NEVER fire from either in front of, or behind, a designated firing line.

15. At no time will trash shooting be permitted anywhere on the range. This includes tin cans, glass containers, ammo boxes, or other types of trash.
16. Do not use standard target frames for patterning shotguns. Use specified marked area and shotgun target frames only. (See diagram for the location to acquire targets.)
17. Unserviceable target frames should be removed from the target house and placed on the ground adjacent to that target house.
18. Only one (1) target frame per shooter if the range is crowded (50% of shooting benches/stations being used).
19. The firing of handheld or shoulder-fired firearms is permitted on the appropriate ranges (See Specific Range Rules). Fixtures such as the Ransom Rest and Free Recoil Benchrest Rifles are also allowed.
20. The firing of Paintball marker guns and Paintball pellet ammunition is prohibited. Paintball pellets may not be used as targets.
21. The firing of any type of Tracer, Armor Piercing, Incendiary, or Explosive Projectile is prohibited.
22. FIRING OF ANY FIREARM CAPABLE OF FULLY AUTOMATIC FIRE IS NOT PERMITTED. The use of any device that imitates full auto firing of rifles or pistols, such as burst fire, bump fire, binary triggers, hellfire triggers, etc., is not permitted. Also, any technique that simulates automatic fire is not permitted. Firearm Exception: Under the supervision of a GTGC Chief RSO, a military or law enforcement group, such as the United States Coast Guard, may shoot rifles capable of fully automatic fire, provided that they are only fired in the semi-automatic mode during official training/qualification sessions.
23. Firing the 50 BMG or any cartridge based on the 50 BMG cartridge case is prohibited (includes .416 Barrett, .408 Cheyenne Tactical, etc.).
24. Per NRA recommendations, it is suggested that eating and drinking not be done on the firing line to avoid the possible ingestion of airborne particulate lead or other dangerous substances.
25. Any club-sponsored match, event, or training class requiring deviation from these SOPs must submit a written request for a variance, including supporting rationale, for the exception to the Director of Safety and Training two (2) weeks prior to the intended date of the match, event or class.

3.0 SPECIFIC RANGE RULES

General Range Rules apply to all ranges, and Specific Range Rules go into specific details about the limitations and restrictions of each range. If you ever need assistance or have a question about a specific range, feel free to ask an RSO or contact a Match Director for that specific range.



RANGE MAP

3.1 ACTION RANGES

PISTOLS, RIFLES, AND SHOTGUNS ARE ALLOWED ON THIS RANGE

There are three Action Ranges numbered 1, 2, and 3 with their locations noted on the range signs (see Range Map, Page 9).

1. All allowed rifle caliber firearms may be fired at paper targets ONLY.
 - a. Clay shotgun targets (pigeons) may be used as targets and must be placed on the face of the impact berm no higher than 48 inches measured from the ground to the top of the target.
 - b. Under no circumstance is anyone to place clay pigeons on or staple targets to the wooden cross ties that protect the metal target stands.
2. Single shot or lever action rifles of any caliber that utilize black powder are allowed on the Action Range.
3. Side Berms are NO SHOOT Protection Berms!
4. No shots may be fired from under the sheltered cover. Do not use the fence as a barrel rest on Action Range #1.
5. All shots fired MUST BE within the following yardages of the Impact Berms:
 - a. Action Range # 1 30 yards
 - b. Action Range # 2 20 yards
 - c. Action Range # 3 25 yards
6. Metal Swingers may only be placed at the base of the Impact Berm.
 - a. The minimum distance between the shooter and the metal target is 20 yards!
 - b. The top of metal swingers may not exceed 48" in height measured from the ground to the top of the metal.
 - c. All shots fired at metal targets must be fired in a manner to avoid the possibility of ricochets.
 - d. Rimfire or centerfire handgun caliber may be fired at metal targets on the Action Range. Firing of centerfire rifle caliber firearms at metal targets is PROHIBITED!
7. The Club provides target frames that have been shortened and are placed in the four steel target stand pipes located at the base of the berm in the center of the range. Members MAY NOT use target frames from the other ranges as they are too tall and do not ensure that all rounds come to rest in the impact berm.
8. Portable target frame holders may be placed at any position that:
 - a. Are within the minimum yardages of the Impact Berm listed in 3.1.5 (a)(b)(c) above.
 - b. Ensures that all rounds fired will die in the Impact Berm.

Note: At Club-approved matches, events, or training classes, you may see a deviation from the standard range rules. Please do not think that as a general member, you can mimic these actions as the Match Directors, Event Coordinator, or Instructor have taken additional safety precautions ensuring that the bullets die in the berm and the participants act in a safe manner whereby a Variance has been granted by the Board of Directors that is specific to that match, event or training class. At no time does this variance apply to the general membership or any other match or event.

3.2 25/50 YARD HANDGUN & RIMFIRE RIFLE RANGE

**ONLY HANDGUNS, PISTOL CALIBER CARBINES OR LEVERGUNS, AND RIMFIRE RIFLES ARE PERMITTED.
NO CENTERFIRE RIFLES OR RIFLE CALIBER FIREARMS ARE PERMITTED.**

1. All shooting must be done from the standing or sitting position with the barrel above the shooting bench. Shooting from a standing, kneeling, or prone position is PROHIBITED *between* the shooting benches.
2. Shoot only at approved targets, which on this range are as follows:
 - a. Paper or cardboard targets mounted on CLUB TARGET STANDS, placed at 25 or 50 yards. No cans, bottles, boxes, etc. are permitted.
 - b. Clay shotgun targets (pigeons) may be used as targets and must be placed on the face of the impact berm, no higher than 48 inches, measured from the ground to the top of the target.
 - c. Personal target stands made from wood or PVC may be used and must be placed at 25 and/or 50 yards. Personal target stands MUST be the same height as club target stands so that bullets will die in the impact berm.
 - d. Metal swingers may be used as targets but must be placed no closer to the firing line than 50 yards for safety reasons (bullet splatter and ricochets). The top of metal swingers may not exceed 48" in height measured from the ground to the top of the metal.

Note: At Club-approved matches, events, or training classes, you may see a deviation from the standard range rules. Please do not think that as a general member, you can mimic these actions as the Match Directors, Event Coordinator, or Instructor have taken additional safety precautions ensuring that the bullets die in the berm and the participants act in a safe manner whereby a Variance has been granted by the Board of Directors that is specific to that match, event or training class. At no time does this variance apply to the general membership or any other match or event.

3.3 LTC RANGE (3/7/15 YARDS)

HANDGUNS ONLY. NO RIFLES, RIFLE CALIBER FIREARMS, PISTOL CALIBER CARBINES, AR/AK PISTOLS, SHOTGUNS, SHOTGUN PISTOLS, LEVERGUNS, OR LONG GUNS OF ANY KIND.

License to Carry (LTC) Range



✓ **ALLOWED**

License to Carry (LTC) Range



NOT ALLOWED



1. All shooting must be done from the standing position with the muzzle above and forward of the shooting bench. Shooting from a standing, kneeling, or prone position is **PROHIBITED** *between* the shooting benches. Shorter stature people and children are not tall enough to shoot at this range; they would be better suited at the Action Range.
2. Shoot only at approved targets, which on this range are as follows:
 - a. Paper or cardboard targets mounted on club target stands, placed at 3, 7, or 15 yards **ONLY**. No cans, bottles, boxes, etc. are permitted. Use only the target frames stored in the concrete block closet next to the LTC range only. Place the target frames back in the LTC target closet when finished shooting.
 - b. Clay shotgun targets (pigeons) may be used as targets and must be placed on the face of the impact berm, no higher than 48 inches, measured from the ground to the top of the target.
 - c. Under no circumstance is anyone to place or staple targets to the wooden cross ties that protect the metal target stand. This includes the berm retaining wall made from wooden cross ties.
3. Metal or steel targets **ARE NOT ALLOWED ON THIS RANGE**.
4. Do not shoot the concrete block safety wall. **DO NOT SHOOT THE BENCH!** Be sure to watch your muzzle elevation and the shooter's height when shooting.

Note: At Club-approved matches, events, or training classes, you may see a deviation from the standard range rules. Please do not think that as a general member, you can mimic these actions as the Match Directors, Event Coordinator, or Instructor have taken additional safety precautions ensuring that the bullets die in the berm and the participants act in a safe manner whereby a Variance has been granted by the Board of Directors that is specific to that match, event or training class. At no time does this variance apply to the general membership or any other match or event.

3.4 100/200 YARD RANGE

RIFLES, SHOTGUNS FIRING SLUGS, MUZZLELOADERS, AND HANDGUNS ARE PERMITTED

1. All shooting must be done from the standing or sitting position with the barrel above the shooting bench. Shooting from a kneeling or prone position is PROHIBITED *between* the shooting benches.
2. You may shoot from the standing, kneeling, or prone position at targets set on the firing line north of the concrete shooting benches. The individual shooting lanes in this area are marked by yellow striping.
3. Shoot only at approved targets, which on this range are as follows:
 - a) Paper or cardboard targets mounted on club target stands, placed at 25, 50, 75, 100, or 200 yards. No cans, bottles, boxes, etc. are permitted.
 - b) Clay shotgun targets (pigeons) may be used as targets and must be placed on the face of the impact berm, no higher than 48 inches, measured from the ground to the top of the target.
 - c) Personal target stands made from wood or PVC may be used and must be placed at 25, 50, 75, 100, or 200 yards. Personal target stands MUST be the same height as club target stands so that bullets will die in the impact berm.
 - d) Steel targets must be placed at the base of the 200-yard impact berm **ONLY**, for safety reasons (bullet splatter and ricochets), **NO EXCEPTIONS**. The top of metal swingers may not exceed 48" in height measured from the ground to the top of the metal. **ONLY GTGC-APPROVED METAL TARGETS ARE ALLOWED that are made with 3/8" AR550 or 1/2" AR500 steel designed and placed in a manner to eliminate or reduce the likelihood of ricochets.**
4. All members must clearly communicate and receive an acknowledgment from others when declaring the range COLD or HOT. The lead person declaring the range cold is responsible for turning the red lights on, signaling that the range is COLD and it is safe to go downrange. That same person remains the lead until everyone is back behind the yellow safety line, the range is declared HOT, and the red light is turned off.

Note: At Club-approved matches, events, or training classes, you may see a deviation from the standard range rules. Please do not think that as a general member, you can mimic these actions as the Match Directors, Event Coordinator, or Instructor have taken additional safety precautions ensuring that the bullets die in the berm and the participants act in a safe manner whereby a Variance has been granted by the Board of Directors that is specific to that match, event or training class. At no time does this variance apply to the general membership or any other match or event.

3.5 600-YARD RANGE

This is a mid-range rifle range. For the safety of club members and other people, who may or may not be on range property, certain rules must be observed. If you do not understand these rules, ask one of the Match Directors or Range Safety Officers for help. The 100-yard rifle range is a better choice for most shooters.

1. All shooting shall be done from the elevated firing lines at 200, 300, 500, and 600 yards ONLY.
2. ONLY Rifles may be shot at this range. NO shotguns. NO handguns.
3. Single shot or lever action rifles of any caliber that utilize black powder are allowed.
4. All members must ensure that they raise the red range flag located at the southern end of the 600-yard firing, indicating that the range is active when anyone is anywhere on this range. The last person leaving the range is responsible for lowering the red range flag and stowing in the green PVC storage pipe, indicating that the range is no longer active.
5. Shoot ONLY at approved targets, which on this range are paper or cardboard targets mounted near the center of the 6' x 6' target frames, with the target frame mounted in the steel target carrier in the pits ONLY. Targets may be a bullseye, animal silhouette, human silhouette, etc., just so that they are paper or cardboard.
6. **Steel targets must be placed on top of the protection berm and centered in front of where the standard target carrier would be for each shooting lane. ONLY GTGC-APPROVED METAL TARGETS ARE ALLOWED that are made with 3/8" AR550 or 1/2" AR500 steel designed and placed in a manner to eliminate or reduce the likelihood of ricochets.**
7. DO NOT shoot at the target frame numbers placed on top of the impact berm!
8. Smoking is prohibited in the target pit area.

Note: At Club-approved matches, events, or training classes, you may see a deviation from the standard range rules. Please do not think that as a general member, you can mimic these actions as the Match Directors, Event Coordinator, or Instructor have taken additional safety precautions ensuring that the bullets die in the berm and the participants act in a safe manner whereby a Variance has been granted by the Board of Directors that is specific to that match, event or training class. At no time does this variance apply to the general membership or any other match or event.

3.6 SHOTGUN RANGE

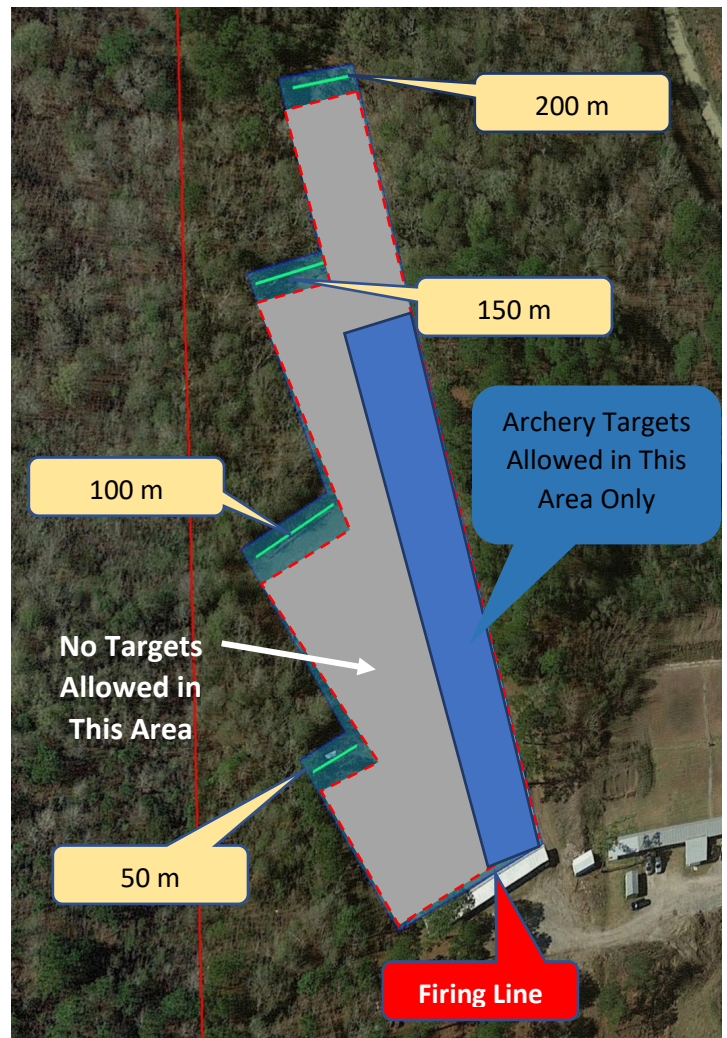
[THIS SECTION IS RESERVED FOR FUTURE SHOTGUN RANGES CURRENTLY IN THE PLANNING & DEVELOPMENT STAGE]

3.7 SILHOUETTE RANGE

**THIS RANGE IS FOR .22 RIMFIRE CALIBER FIREARMS ONLY
(HUNTER ARCHERY IS ALLOWED ON A TEMPORARY BASIS)**

1. The firing of centerfire pistol, rifles, muzzle-loading firearms, or shotguns is PROHIBITED on this range.
2. Only Short/low-hanging metal targets may be shot at 50 meters, 100 meters, 150 meters, and 200 meters on this range (*See diagram below*).
3. Do not use target frames on this range, as all rounds must die in the berms that are only 3-4 feet high located behind the target rails.
4. Archery (includes Bow and Arrow, Crossbow, Compound, and Recurve Bows) is allowed on the North End of the Range but must coordinate with other shooters if present to observe standard hot/cold safety commands, and hearing protection is required. Archers must provide their own target bales placed in the area indicated by blue on the diagram below. All arrows, cross bolts, etc., must stay within the range. Remove all target bales and clean up the area when finished.

***Note:** At Club-approved matches, events, or training classes, you may see a deviation from the standard range rules. Please do not think that as a general member, you can mimic these actions as the Match Directors, Event Coordinator, or Instructor have taken additional safety precautions ensuring that the bullets die in the berm and the participants act in a safe manner whereby a Variance has been granted by the Board of Directors that is specific to that match, event or training class. At no time does this variance apply to the general membership or any other match or event.*



3.8 4-H ARCHERY RANGE

NO SHOOTING OF ANY FIREARM IS ALLOWED ON THIS RANGE

This range is NOT OPEN to the General Membership as no backstop is available to prevent arrows or projectiles from leaving the range. The Club is currently working to expand this range to enable safe use by members of the Club.

This range is for the use of the 4-H Archery program ONLY under the direct supervision of the 4-H program directors, and 4-H Certified Coaches under the guidelines contained in the GTGC Board Approved 4-H Archery Range Safety Plan.

The goal is to provide a safe and comfortable archery program for participants and spectators. General Rules are adopted from publications of the National Field Archery Association (NFAA). It is the responsibility of each archer to know the safety rules, handle equipment appropriately, and shoot in a safe manner.

4.0 RULES FOR GTGC ORGANIZED MATCHES

CONDUCTED UNDER THE SUPERVISION OF A MATCH DIRECTOR OR GTGC RANGE SAFETY OFFICER

1. All Match Directors and Assistant Match Directors must be NRA-certified Range Safety Officers and receive training on Club-specific range safety and site limitations.
2. Direct Supervision by a Match Director/GTGC Range Safety Officer will allow for deviation from the General Club Rules and/or the Range Safety Rules. Any such deviation must have a written Match Variance approved by the Board of Directors that will become a part of the SOPs. Once approved, any further deviations will require Match Directors to submit a new request for approval of a Match Variance.
3. Match Directors/GTGC Range Safety Officers will follow the competition guidelines set forth by the sanctioning organization.
4. Failure to submit an approved range safety plan may result in the cancellation of said match.
5. ***At no time will any deviation from the General Club Rules and/or the Range Safety Rules compromise the safety of the match competitors or spectators!***

Note: At Club-approved matches, events, or training classes, you may see a deviation from the standard range rules. Please do not think that as a general member, you can mimic these actions as the Match Directors, Event Coordinator, or Instructor have taken additional safety precautions ensuring that the bullets die in the berm and the participants act in a safe manner whereby a Variance has been granted by the Board of Directors that is specific to that match, event or training class. At no time does this variance apply to the general membership or any other match or event.

5.0 GTGC FIREARMS INSTRUCTOR POLICY

COMMERCIAL INSTRUCTORS AND PROGRAM LEADERS MUST FOLLOW THE MINIMUM GUIDELINES HEREIN AND FALL UNDER THE DIRECTOR OF SAFETY AND TRAINING FOR VERIFICATION AND RANGE LIMITATION TRAINING. FOR DETAILED REQUIREMENTS AND AN APPLICATION, REFER TO THE INSTRUCTOR PACKET.

All Instructors providing training and instruction to one or more students for compensation must submit an application to the Golden Triangle Gun Club ("the Club") Board of Directors ("the Board") for approval to use the Club's facilities for training classes on an annual calendar year basis. Any Instructor who has not been approved by the Board in compliance with this policy and discovered to be providing such instruction at the Club will be subject to having their Club Membership suspended or revoked (*See Appendix B for List of Approved Instructors*).

Instructor Requirements:

- Must be 21 years or older and be eligible to possess and use firearms in accordance with State & Federal Laws;
- Must be a Club member in good standing for a minimum of 5 years preceding the submittal of the application.
- Must have a demonstrated history of volunteering at the range in support of the Club's objectives and activities. This may include serving as a Match Director or Assistant Match Director, construction, maintaining and improving the Club facilities, mentoring youths in the 4-H or Junior Rifle programs, and serving as a Range Safety Officer in accordance with the Club Standard Operating Procedures (SOP), and/or similar activities approved by the Board;
- Must be qualified in the discipline that they are teaching and provide written documentation of such qualifications, including certifications by recognized bodies, organizations, or institutions meeting Board approval;
- Must be a certified NRA Range Safety Officer per the Club's SOP and received additional training on specific Club Range Safety Rules and Range Limitations;
- All Assistant Instructors or Safety Officers used during Range activities must also be certified NRA Range Safety Officers, adhere to the Club's SOPs, and have received training on specific Club Range Safety Rules and Range Limitations. The Assistant Instructor or RSO must also be 21 years or older and works under the responsible charge and supervision of the Board approved Instructor; and
- Must have and maintain Firearms Instructor Insurance acceptable to the Board and provide the Club with a certificate of insurance naming the Club as an additional insured per the minimum coverage limits (see Instructor packet for updated limits).

6.0 GOLDEN TRIANGLE GUN CLUB STANDARD SAFETY BRIEF

#1 Treat all guns as if they are always loaded.

Take the time to treat every firearm that you encounter as though it COULD be loaded. Take the time necessary to safely inspect the firearm yourself before moving on.

#2 Never let the muzzle cover anything that you are not willing to destroy.

Situational awareness is critical to firearm safety. It is your responsibility to ALWAYS keep the gun pointed in a safe direction 100% of the time whether you are setting up, loading, reloading, shooting, showing clear, or laying the firearm down on the bench. When walking with or transporting a long gun muzzle is Up or Down, and the firearm is unloaded.

#3 Keep your finger off the trigger until your sights are on target and you have made the decision to shoot.

From the moment you make physical contact with the firearm, your finger must be kept straight and rest along the side of the frame. Through all administrative actions such as, but not limited to, picking up, loading, reloading, fixing malfunctions, unloading or resting in various ready positions, your finger is in this indexed position along the frame. Only when it is appropriate to shoot can you move your finger from its indexed position onto the trigger.

#4 Be sure of your target and what lies beyond it.

You are responsible for everything which a round you shoot comes in contact with. This means another big dose of situational awareness BEFORE you make the decision to shoot! Consider the height of your target and the angle at which you will shoot it. If the round would make an impact through your intended target and impact something other than a bullet-safe berm, trap, or safe zone, then you are obligated not to take the shot.

Additional Safety Rules

The National Rifle Association (NRA) teaches additional rules to keep in mind:

- Know how to use the gun safely.
- Be sure the gun is safe to operate.
- Use only the correct ammunition for your gun.
- Wear eye and ear protection, as appropriate.
- Never use alcohol or prescription, or other drugs before or while shooting.
- Be aware that certain types of guns and shooting activities require additional safety precautions.
- Frequently service and maintain your firearm.

Know Yourself

If you feel confused, unsure, overwhelmed, or uncomfortable, choose to opt-out of shooting. Not taking the shot is the best and safest thing to do. If you feel that the course of fire, target placement, or speed of the drill would result in your potentially breaking any of the Firearm Safety Rules, it is your obligation not to take the shot. If at any time during a class, event, or practice session you find that you are unsure that your actions could become unsafe, give yourself permission to PAUSE! You and only you are in 100% control of the firearm in your possession. Know yourself and trust yourself enough to stay in control of your thoughts, emotions, and actions.

7.0 LOST AND FOUND POLICY

The Lost and Found Policy and procedures are intended to ensure that items reported lost or found on Club property are properly accounted for and, in the case of items found, returned to their rightful owner or disposed of by the Club. "Lost property" means any unattended, abandoned, misplaced, or forgotten item, including but not limited to firearms, range bags, targets, equipment, cash, jewelry, phones, books, keys, documents, or personal identification papers (driver's license, credit cards, etc.) which are found within the boundaries of the Club, pending the identification of the rightful owner or appropriate disposal thereof.

The Club assumes no responsibility whatsoever for the care and/or protection of any personal belonging left unattended on Club property and for loss, under any circumstances, including theft, vandalism, or malicious mischief of such belonging. The Club's RSO building is designated as the central repository, and the Director of Safety and Training is responsible for lost and found property for the Club. All found items should be turned into the Club RSO on duty for identification of the rightful owner, if possible. If an RSO is not on duty, members should contact the Director of Safety and Training to make arrangements to transfer the property to the Club's repository.

DISPOSITION OF LOST AND FOUND ITEMS

Firearms - Will be held for thirty (30) days. After thirty (30) days, firearms shall be turned over to the Jefferson County Sheriff's Office.

Wallets/Credit Cards – Will be held for ninety (90) days. Every effort will be made to contact the owner. However, after ninety (90) days, any cash will be deposited into the Club's account. Credit cards and other items will be destroyed.

Driver's Licenses and Licenses to Carry – If the owner cannot be found or contacted within sixty (60) days, the cards will be delivered to the Texas Department of Public Safety.

All Other Items – Items will be held for sixty (60) days and then, depending upon the type of item, will either be destroyed, discarded, or transferred to a Club program.

RETRIEVAL OF ITEMS TO THE RIGHTFUL OWNER

Any individual requesting a lost item must present valid personal photographic identification and a description of the item before it will be returned to them. If the item has no identification on it, but the individual can describe it or open it (i.e. phone, tablet), the item will be returned once a transfer of ownership form has been completed.

APPENDIX A - BOARD OF DIRECTORS LIST

Current as of September 11, 2023

OFFICERS AND DIRECTORS	
Richard Worthey	President
Charles Shelton	Vice-President
Heather Avery	Secretary-Treasurer (appointed by the Board)
Stephen "Doc" Watson	Director of Media Relations
Richard Worthey	Director of Safety and Training
James Reaux	Director of Security
Heather Avery	Director of Women's Programs
David Cheshire	Director-at-Large
Diana Licatino	Director-at-Large
John Woods	Director-at-Large
MATCH DIRECTORS	
Andre Rosales	MD-International Defensive Pistol Association (IDPA); AMD-Rimfire Challenge Shooting Association (RSCA)
Wil Cole	MD-Hi-Power 600-yard
Andy Legg	AMD-Hi-Power 600-yard
Cary Walker	AMD-International Defensive Pistol Association (IDPA)
Charlie Shelton	AMD-.22 Caliber Rifle Silhouette
Andre Rosales	MD-Rimfire Challenge Shooting Association (RSCA)
Brandi Sanford	AMD- 4-H Program
Howard Maxwell	MD- 4-H Program
J.C. Verde	MD-Single Action Shooting Society (SASS)
Jack Vick	AMD-Single Action Shooting Society (SASS)
John "Al" Johnson	MD-Small Bore Pistol Silhouette; MD-Large Bore Pistol Falling Plate
Lew Sheffield	AMD - Small Bore Pistol Silhouette; AMD-Large Bore Pistol Falling Plate
Kristen Morton	MD-Junior Service Rifle
Mike Hardy	MD - Military Bolt Rifle; MD - M1 Garand; MD - 5th Saturday High-Power Rifle; MD - Military Rifle Match
Ron Page	MD-.22 Caliber Rifle Silhouette; MD – (NRA) Cowboy Lever Action Rimfire Sil.
	AMD- (NRA) Cowboy Lever Action Rimfire Silhouette
Walt Haley	AMD-Junior Service Rifle
	AMD-Rimfire Challenge Shooting Association (RSCA)
Ken Bean	MD – Scholastic Shooting Sports Foundation

APPENDIX B – RANGE SAFETY OFFICERS

Current September 11, 2023

The following Club members are NRA Certified Range Safety Officers and have received the GTGC Range Safety Officer orientation certifying them to act as Range Safety Officers for the Golden Triangle Gun Club in accordance with the GTGC Standard Operating Procedures:

Heather Avery, CRSO	Randall L. Gruver	Timothy O. Phillips
Tommy G. Cruse, Sr, CRSO	Cherie L. Hampton	Christopher Plott
Ronnie W. Dillon, CRSO	Michael Hardy	Alton Redus
Albert C. Faggard, Jr, CRSO	Jim Harings	Dean Richardson
Walter Haley, CRSO	J.T. Haynes	Cody B. Ross
James Reaux, CRSO	Richard Hensley	Gerard Roy
Andre' Rosales, III, CRSO	Danny Higgins, Sr.	Brandi Sandford
Richard Worthey, CRSO	John "Al" Johnson	Tommy Saulter
Larry Bandaccari	John E. LaFlamme	Stephen J. Schange, MD
Layne Bonin	Andy Legg	Charles C. Shelton
Charles R. Boren	Richard T. Lepkowski	Charles Sherman
James Boykin	Diana Licatino	Dave L. Shows
Donnis Brett	Robert C. Matherne	Michael Turner
Nicholas Brocato	Howard James Maxwell	J.C. Verde
David Lee Cheshire	Stephen P. May	Jack G. Vick
Steve Clegg	Chilton E. Miles III	Cary L. Walker
William C. Cole	Danny Miller	Terry Washburn
Brian S. Devillier	James M. Mills	Stephen "Doc" Watson
Dewey Erwin III	Kristen Morton	John D. Woods
Mark Feeney	Gregory Nash	Jim Yates
Matthew Godfrey	Ronald K. Page	

APPENDIX B-1 - PROCEDURES AND PENALTIES

Violation Class	Applicable Rules	1 st	2 nd	3 rd
A	1.0.2 1.0.3 1.0.7 1.0.9 1.0.13 2.0.21 2.0.22 2.0.23 3.5.7 3.6 5.0	Immediate suspension pending review and action by the Board of Directors up to and including revocation of membership	Immediate suspension pending final revocation of membership by the Board of Directors	
B	All except Class A violations	Verbal Warning	Written Warning	Immediate suspension pending final revocation of membership by the Board of Directors

PENALTY SCHEDULE

The RSO that witnesses or investigates the report of Class B violations has 100% discretion in choosing between issuing violators a verbal warning, written warning, or removing the offending violator(s) from the Club based upon Club rules and the severity of the action or incident as it relates to the safety of members, guests, and the public at large, as well as the protection of club property. Violations that result in the issuance of a written warning or removal from Club property will have a written report of the incident and any witness statements forwarded by the RSO to the Director of Safety and Training for review. Upon their review, the Director of Safety and Training may initiate further action or refer the matter to the Range Safety and Rules Committee and the Board of Directors to determine the appropriate action.

Violations may result in the following actions:

CLUB MEMBERS	GUEST OF A MEMBER OR EVENT
Verbal Warning	Verbal Warning
Written Warning	Removed from the Club Property
Require additional training to be able to use a specific range or firearm	Trespass charges may be filed with Jefferson County LE/DA
Immediate suspension pending revocation of membership by the Board of Directors	NON-CLUB MEMBERS TRESPASSING
Removed from Club with Notice of Trespass Warrant	Immediate removal from the Club Property
Trespass charges may be filed with Jefferson County	Trespass charges may be filed with Jefferson County

The penalty for Class A violations is the member's immediate suspension by the RSO, who will confiscate the member's printed card (if any) and remove them from the Club property. A written report with any witness statements and supporting evidence or documents will be submitted immediately to the Director of Range Safety and Training for further review and Board action. The Director of Range Safety and Training will notify the Club Secretary-Treasurer of said actions, who will suspend their membership in the Club's management system, thereby disabling their electronic membership card.

Acts Resulting in Immediate Removal, Suspension, and possible Loss of Membership Privileges:

- Careless, reckless acts without regard to persons or property
- Threatening behavior
- Irrational behavior
- Physical or verbally abusive language or behavior
- Under the influence of alcohol, drugs, or foreign substances
- Trespassing
- Destruction of club property
- Giving gate code to a non-member

APPENDIX C – LIST OF APPROVED INSTRUCTORS

(Expires December 31, 2023)

HEATHER AVERY

Instructor Qualifications: NRA Training Counselor, NRA Certified Chief Range Safety Officer, NRA Certified Instructor in CCW, Refuse to Be A Victim, Basic Pistol, Rifle and Shotgun, Force-on-Force Instructor, Rangemaster Certified Defensive Shotgun Instructor, Texas Department of Public Safety Certified License to Carry Handgun Instructor.

Courses: All NRA disciplines certified to teach, Defensive Shotgun, Texas License to Carry Handgun, Ladies Basic Pistol, Ladies How to Conceal Carry, Semi-Auto Pistol Fit, Shoot House Scenarios and Personal Lessons.

TOMMY G. CRUSE

Instructor Qualifications: NRA Certified Chief Range Safety Officer, NRA Certified Instructor in Pistol, Rifle, Shotgun, Personal Protection In The Home, Personal Protection Outside The Home, USAF Small Arms Specialist, NRA Precision Rifle (Sniper) Certified Instructor Development, Texas Department of Criminal Justice Certified Firearms Instructor, Texas Department of Public Safety Certified License to Carry Handgun Instructor, Texas Department of Public Safety Certified School Safety Instructor Courses:

Courses: All NRA disciplines certified to teach as well as Texas LTC and School Safety Certification.

WALTER A. HALEY

Instructor Qualifications: NRA Certified Chief Range Safety Officer, NRA Certified Instructor in Home Firearm Safety, Metallic Cartridge Reloading, Pistol, Rifle, Shotgun, Shotgun Shell Reloading, Personal Protection In The Home, Personal Protection Outside The Home, NRA Training Counselor, Civilian Marksmanship Program/United States Army Marksmanship Unity Military Service Rifle Instructor, Master Level I.

Courses: All NRA disciplines certified to teach, as well as Civilian Rifle and Pistol utilizing CMP/USAMU course materials.

STEPHEN E. WATSON

Instructor Qualifications: NRA Certified Range Safety Officer, NRA Certified Pistol Instructor

Courses: Basic Handgun Safety

RICHARD L. WORTHEY

Instructor Qualifications: NRA Certified Chief Range Safety Officer, NRA Certified Instructor in Home Firearm Safety, Advanced Pistol, CCW, Rifle, Shotgun, Personal Protection In The Home, Personal Protection Outside The Home, Refuse To Be A Victim, Rangemaster Certified Master Pistol Instructor and Defensive Shotgun Instructor, Texas Department of Public Safety Certified License to Carry Handgun Instructor, Texas Department of Public Safety Certified School Safety Instructor, ALERRT Trainer, Deadly Force Instructor, Force-on-Force Instructor, and OC Spray Instructor.

Courses: All NRA disciplines certified to teach, Defensive Pistol, Defensive Shotgun, Texas License to Carry Handgun, Use of Force, School Safety Certification, and Response to Active Shooter Events.

APPENDIX D – RANGE VARIATIONS AND SAFETY PLANS

NOTE: Approved safety plans are currently being developed for the Club sponsored or approved Matches and Programs listed below:

Silhouette Range

- .22 Rimfire Caliber Rifle Silhouette
- (NRA) Cowboy Lever Action Rimfire Silhouette

Action Range

- International Defensive Pistol Association (IDPA)
- Rimfire Challenge Shooting Association (RSCA)
- Single Action Shooting Society (SASS)
- LE Agency Range Qualification Events

Pistol/Rimfire Range

- Small Bore Pistol Silhouette
- Large Bore Pistol Falling Plate

600 Yard Range

- Junior Service Rifle
- Military Bolt Rifle
- M1 Garand
- High-Power Rifle
- Hi-Power 600-yard
- Military Rifle Match

Rifle Range

- 4-H Program
- Benchrest Rifle

4-H Archery Range

- 4-H Archery Program

Activity Center – 10-meter Indoor Range

- 4-H Indoor Air Gun Program

Women's Program

- Meet-N-Greet Event 6-28-2019 (on file)

APPENDIX E – RANGE INSPECTION CHECKLIST

Inspected by:		Date:		
		Yes	No	Remarks/Exceptions
A.	General Property			
	Controlled Access Gate Closed/Operational			
	Bulletin Board Up to Date			
	Entrance Road in Good Condition			
	General Range Rules Signs Good			
	Electrical Service Good			
B.	RSO Building			
	RSO Building Locked			
	Electrical Service Good			
	Water Supply Checked			
	Lights On/Off			
	A/C or Heater On/Off			
	First-Aid Kit Filled/Accessible			
	RSO Supplies Stocked			
	Security Cameras Operational and Functioning			
	Empty Trash Receptacles Available			
	Internet WiFi Available			
C.	Restrooms			
	Clean			
	Toilet Paper, Towels and Soap Checked			
	First-Aid Kit Filled/Accessible			
	Empty Trash Receptacles Available			
D.	Activities Center			
	Activities Center Locked			
	Clean			
	A/C Units Operating Normally			
	A/C Filters Clean (all units)			
	Lights On/Off			
	Empty Trash Receptacles Available			
	No Leftover Food in Bldg			
	Tables and Chairs Stored or Placed Appropriately			
	Internet WiFi Available			
E.	Silhouette Range			
	Backstop/Impact Area Inspected			
	Target Rails Inspected			
	Shooting Benches/Tables Inspected			
	Firing Line Clean			
	Safe Area Line Marked			
	Range Rule Signs Posted			
	Empty Trash Receptacles Available			
	Broom & Dustpan Available			
F.	LTC Range			
	Backstop/Impact Area Inspected			
	Target Frames/Mounts in Good Repair			
	Shooting Benches/Tables Inspected			

	Firing Line Clean			
	Safe Area Line Marked			
	Range Rule Signs Posted			
	Empty Trash Receptacles Available			
	Broom & Dustpan Available			
G.	25/50 Pistol & Rimfire Range			
	Backstop/Impact Area Inspected			
	Target Frames/Mounts in Good Repair			
	Shooting Benches/Tables Inspected			
	Firing Line Clean			
	Safe Area Line Marked			
	Range Rule Signs Posted			
	Empty Trash Receptacles Available			
	Broom & Dustpan Available			
	Gun Racks Available			
H.	Action Range			
	Backstop/Impact Area Inspected			
	Equipment Tables Inspected			
	Range Area Clean			
	Safe Area Marked			
	Range Rule Signs Posted			
	Empty Trash Receptacles Available			
	Broom & Dustpan Available			
	Gun Racks Available			
I.	100/200 Rifle Range			
	Backstop/Impact Area Inspected			
	Target Frames/Mounts in Good Repair			
	Firing Points Numbered/Clean			
	Range Area Clean			
	Shooting Benches/Tables Inspected			
	Safe Area Line Marked			
	Range Rule Signs Posted			
	Empty Trash Receptacles Available			
	Broom & Dustpan Available			
	Gun Racks Available			
J.	200/300/600 High Power Rifle Range			
	Backstop/Impact Area Inspected			
	Number Boards Painted and Visible			
	Firing Points Numbered/Clean			
	Shooting Benches/Tables Inspected			
	Flag in Good Shape & Properly Stowed			
	Range Rule Signs Posted			
	Empty Trash Receptacles Available			
	Broom & Dustpan Available			
	Gun Racks Available			

